



2015 New Products



## INDEX

### *SunRace*

---

CRANKSETs	01
FRONT DERAILLEURS	06
CASSETTEs	08
TRIGGER SHIFTERs	12
TWIST SHIFTERs	16
CHAINs	17

### »STURMEY | ARCHER«

---

CRANKSETs	18
DYNOHUBs	19

## FLUID DRIVE



- FCMS66



- BBM97 (S1)

## FCMS66

36-22T

- 2 x 10-Speed
- Forged Alloy Crank
- Alloy Outer Chainring
- Chromoly Axle
- SCM435 Bolt & Nuts
- Weight : 975g incl. BB



- FCMS58



- BBM97 (S1)

## FCMS58

48-36-26T

- 3 x 10-Speed
- Forged Alloy Crank
- Alloy Outer Chainring
- Chromoly Axle
- SCM435 Bolt & Nuts
- Weight : 1231g incl. BB



- FCMS50



- BBM97 (S1)

## FCMS50

40-30-22T

- 3 x 10-Speed
- Forged Alloy Crank
- Alloy Outer Chainring
- Chromoly Axle
- SCM435 Bolt & Nuts
- Weight : 1071g incl. BB

9 SPEEDS

m9

FLUID DRIVE



- FCM958



- BBM97 (S1)

**FCM958**

48-36-26T

- 3 x 9-Speed
- Forged Alloy Crank
- Alloy Outer Chainring
- Chromoly Axle
- SCM435 Bolt & Nuts
- Weight : 1231g incl. BB



- FCM954



- BBM97 (S1)

**FCM954**

44-32-22T

- 3 x 9-Speed
- Forged Alloy Crank
- Alloy Outer Chainring
- Chromoly Axle
- SCM435 Bolt & Nuts
- Weight : 1083g incl. BB



- FCM950



- BBM97 (S1)

**FCM950**

40-30-22T

- 3 x 9-Speed
- Forged Alloy Crank
- Alloy Outer Chainring
- Chromoly Axle
- SCM435 Bolt & Nuts
- Weight : 1071g incl. BB



# m9 9 SPEEDS

## FLUID DRIVE



- FCM918

**FCM918****48-36-26T**

- 3 x 9-Speed
- Forged Alloy Crank
- Alloy Outer Chainring
- SCM435 Bolt & Nuts
- Weight : 964g



- BBS15



- FCM914

**FCM914****44-32-22T**

- 3 x 9-Speed
- Forged Alloy Crank
- Alloy Outer Chainring
- SCM435 Bolt & Nuts
- Weight : 964g



- BBS15



- FCM910

**FCM910****40-30-22T**

- 3 x 9-Speed
- Forged Alloy Crank
- Alloy Outer Chainring
- SCM435 Bolt & Nuts
- Weight : 801g



- BBS15



- FCM904

**FCM904****44-32-22T**

- 3 x 9-Speed
- Forged Alloy Crank
- Weight : 990g



- BBS15

8/7 SPEEDS

## FLUID DRIVE

m5

FCM52

42-34-24T

- 3 x 8/7-Speed
- Alloy I-Crank [Black or Silver]
- Steel Chainrings [Black with Silver or All Black]
- [2] Disk Cover
- [3] Chain Guard Cover



[ 2 ]



[ 3 ]



m5

FCM500

42-34-24T

- 3 x 8/7-Speed
- Forged Alloy Crank [Black or Silver]
- Steel Chainrings [Black with Silver or All Black]
- [2] Disk Cover
- [3] Chain Guard Cover



[ 2 ]



[ 3 ]



7/8 SPEEDS

FLUID DRIVE

m3

FCM33

48-38-28T

- 3 x 8/7-Speed
- Alloy I-Crank [Black or Silver]
- Steel Chainrings [Black with Silver or All Black]
- [2] Disk Cover
- [3] Chain Guard Cover



[2]



[3]



m3

FCM300

48-38-28T

- 3 x 8/7-Speed
- Forged Alloy Crank [Black or Silver]
- Steel Chainrings [Black with Silver or All Black]
- [2] Disk Cover
- [3] Chain Guard Cover



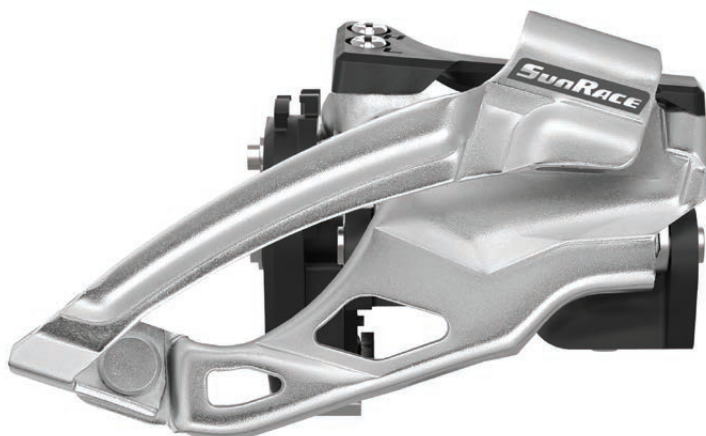
[2]



[3]

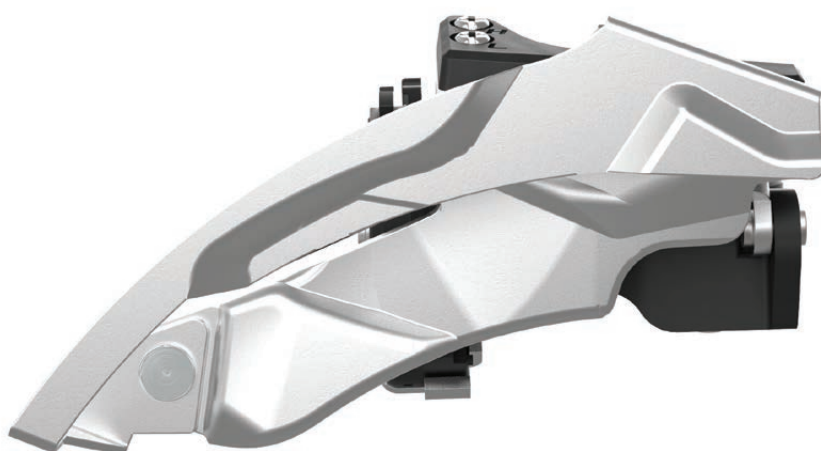
10 SPEEDS

ms



### FDMS66

- 2 x 10-Speed
- Top Swing
- Alloy Body & Clamp
- Matt Chrome Plated Chain Guide
- Dual Pull
- Stainless Bolts
- Multi Clamp Insert [ 34.9/ 31.8/ 28.6 ]
- Compatible : 38-26T / 38-24T / 36-22T



### FDMS28

- 3 x 10-Speed
- Top Swing
- Alloy Body & Clamp
- Matt Chrome Plated Chain Guide
- Dual Pull
- Stainless Bolts
- Multi Clamp Insert [ 34.9/ 31.8/ 28.6 ]
- Compatible : 48-36-26T



### FDMS20

- 3 x 10-Speed
- Top Swing
- Alloy Body & Clamp
- Matt Chrome Plated Chain Guide
- Dual Pull
- Stainless Bolts
- Multi Clamp Insert [ 34.9/ 31.8/ 28.6 ]
- Compatible : 40-30-22T





## m9 9 SPEEDS

### FDM924

- 3 x 9-Speed
- Top Swing
- Alloy Body & Clamp
- Chrome Plated Chain Guide
- Dual Pull
- Stainless Bolts
- Multi Clamp Insert [ 34.9/ 31.8/ 28.6 ]
- Compatible : 48-36-26T / 44-32-22T

### FDM920

- 3 x 9-Speed
- Top Swing
- Alloy Body & Clamp
- Chrome Plated Chain Guide
- Dual Pull
- Stainless Bolts
- Multi Clamp Insert [ 34.9/ 31.8/ 28.6 ]
- Compatible : 40-30-22T



## 8/7 SPEEDS

## m5

### FDM500

- 3 x 8/7-Speed
- Top Swing
- Alloy Body & Clamp
- Chrome Plated Chain Guide
- Dual Pull
- Multi Clamp Insert [ 34.9/ 31.8/ 28.6 ]
- Compatible : 42-34-24T



## 7/8 SPEEDS

## m3

### FDM300

- 3 x 7/8-Speed
- Top Swing
- Alloy Body & Clamp
- Chrome Plated Chain Guide
- Dual Pull
- Multi Clamp Insert [ 34.9/ 31.8/ 28.6 ]
- Compatible : 48-38-28T / 42-32-22T

1 SPEEDS

MX

CSMX9 .ETY

10-42T

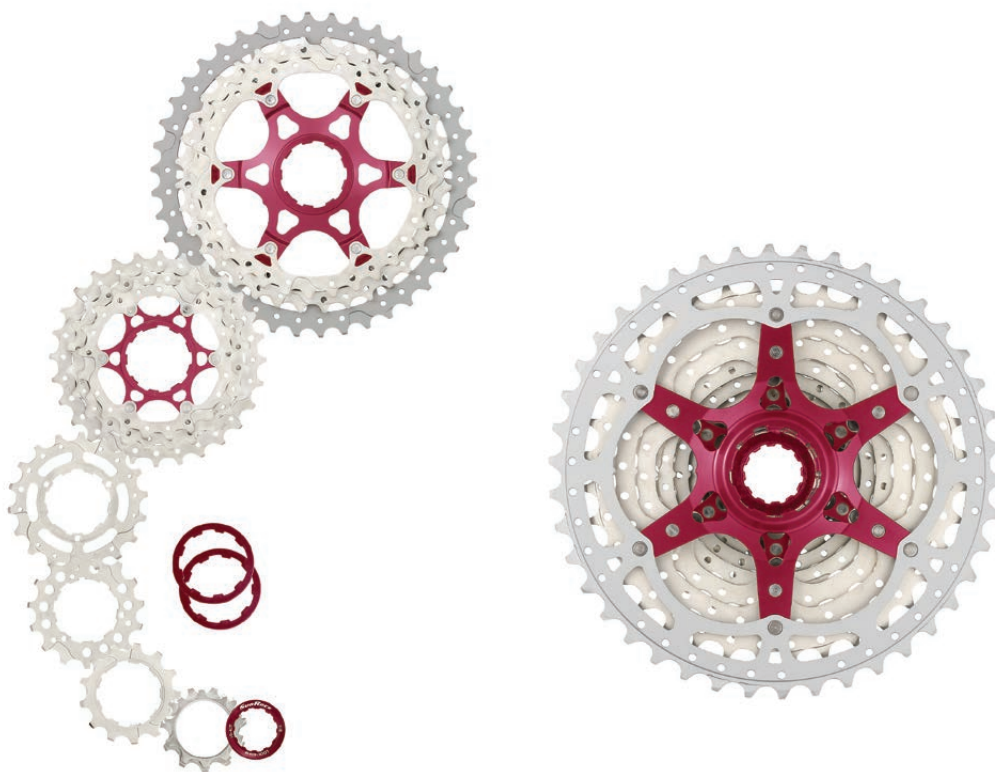
- 11-speed Wide Ratio
- 6 Sprockets on 2 Alloy Spider Carriers
- A7075 Largest Sprocket
- Alloy Lockring & Spacer
- [TY] 10-12-14-16-18-21-24-28-32-36-42
- Finish : M[Champagne] / O[Black Chrome]
- Weight : 395g



M [ Champagne ]



O [ Black Chrome ]





# mx | 11 SPEEDS

CSMX8 .EAY 11-42T  
CSMX8 .EAX 11-40T

- 11-speed Wide Ratio
- 6 Sprockets on 2 Alloy Spider Carriers
- A7075 Largest Sprocket
- Alloy Lockring & Spacers
- [AY] 11-13-15-17-19-21-24-28-32-36-42
- [AX] 11-13-15-17-19-21-24-28-32-36-40
- Finish : M[Champagne] / O[Black Chrome]
- Weight : 401g(11-42) / 389g(11-40)



M [ Champagne ]



O [ Black Chrome ]



M [ Champagne ]



E [ ED Black ]



# ms | 11 SPEEDS

CSMS8 .EAY 11-42T  
CSMS8 .EAX 11-40T

- 11-speed Wide Ratio
- 6 Sprockets on 2 Alloy Spider Carriers
- [AY] 11-13-15-17-19-21-24-28-32-36-42
- [AX] 11-13-15-17-19-21-24-28-32-36-40
- Finish : M[Champagne] / E[ED Black]
- Weight : 465g(11-42) / 429g(11-40)



10 SPEEDS



M [ Champagne ]



O [ Black Chrome ]



MX

CSMX3 .TAY  
CSMX3 .TAX11-42T  
11-40T

- 10-speed Wide Ratio
- 6 Sprockets on 2 Alloy Spider Carriers
- A7075 Largest Sprocket
- Alloy Lockring & Spacers
- [AY] 11-13-15-18-21-24-28-32-36-42
- [AX] 11-13-15-18-21-24-28-32-36-40
- Finish : M[Champagne] / O[Black Chrome]
- Weight : 387g(11-42) / 378g(11-40)



10 SPEEDS



M [ Champagne ]



E [ ED Black ]



MS

CSMS3 .TAY  
CSMS3 .TAX11-42T  
11-40T

- 10-speed Wide Ratio
- 6 Sprockets on 2 Alloy Spider Carriers
- [AY] 11-13-15-18-21-24-28-32-36-42
- [AX] 11-13-15-18-21-24-28-32-36-40
- Finish : M[Champagne] / E[ED Black]
- Weight : 448g(11-42) / 414g(11-40)



M [ Champagne ]



E [ ED Black ]

CSMS1 .TAW  
CSMS1 .TAV11-36T  
11-34T

- 10-speed
- [AW] 11-13-15-17-19-21-24-28-32-36  
4 Cogs on 2 Steel Spiders
- [AY] 11-12-13-15-17-19-21-24-28-34  
3 Cogs on 1 Steel Spider
- Finish : M[Champagne] / E[ED Black]
- Weight: 390g(AW) / 328g(AV)







### CSRS3 .EAU 11-32T

- 11-speed
- [AU] 11-12-13-14-15-17-19-21-24-28-32  
3 Cogs on 1 Steel Spider
- Finish : M[Champagne]
- Weight: 332g



### CSRS1 .TAU 11-32T CSRS1 .TAS 11-28T

- 10-speed
- [AU] 11-12-13-15-17-19-21-24-28-32  
3 Cogs on 1 Steel Spider
- [AS] 11-12-13-14-15-17-19-21-24-28  
2 Cogs on 1 Steel Spider
- Finish : M[Champagne]
- Weight: 322g (AU) / 267g(AS)



10,9,8,7 SPEEDS



- DLMS00

**ms**

### DLMS00

- 10-Speed, Triple/Double (switchable)
- Dual Release Function
- Alloy Large Lever with Composite Small Lever
- Gear Display
- Stainless Bolts
- Slick-Stainless Inner Cable
- Weight : 262g

**m9**

### DLM930

- 9-Speed, Triple
- Dual Release Function
- Alloy Large Lever with Composite Small Lever
- Gear Display
- Stainless Bolts
- Slick-Stainless Inner Cable
- Weight : 262g



### DLM900

- 9-Speed, Triple
- Dual Release Function
- Composite Levers
- Gear Display
- Slick-Galvanized Inner Cable
- Weight : 268g

**m6**

### DLM600

- 8-Speed, Triple
- Dual Release Function
- Composite Levers
- Gear Display
- Slick-Galvanized Inner Cable
- Weight : 268g



**m4**

### DLM400

- 7-Speed, Triple
- Dual Release Function
- Composite Levers
- Gear Display
- Slick-Galvanized Inner Cable
- Weight : 268g



10,9,8,7 SPEEDS



- STM900

ms

## STM500

- 10-Speed, Triple/Double (switchable)
- Dual Release Function
- Alloy Large Lever with Composite Small Lever
- Gear Display
- Stainless Bolts
- Slick-Stainless Inner Cable
- Forged Alloy Brake Lever
- Alloy Brake Bracket
- For V-Brake & Mechanical Disc Brake
- Ergonomic 2 Finger Brake Lever
- Weight : 462g

m9

## STM900

- 9-Speed, Triple
- Dual Release Function
- Alloy Large Lever with Composite Small Lever
- Gear Display
- Stainless Bolts
- Slick-Stainless Inner Cable
- Forged Alloy Brake Lever
- Alloy Brake Bracket
- For V-Brake & Mechanical Disc Brake
- Ergonomic 2 Finger Brake Lever
- Weight : 462g

m6

## STM600

- 8-Speed, Triple
- Dual Release Function
- Composite Levers
- Gear Display
- Slick- Galvanized Inner Cable
- Forged Alloy Brake Lever
- Alloy Brake Bracket
- For V-Brake & Mechanical Disc Brake
- Ergonomic 2 Finger Brake Lever
- Weight : 468g



m4

## STM400

- 7-Speed, Triple
- Dual Release Function
- Composite Levers
- Gear Display
- Slick- Galvanized Inner Cable
- Forged Alloy Brake Lever
- Alloy Brake Bracket
- For V-Brake & Mechanical Disc Brake
- Ergonomic 2 Finger Brake Lever
- Weight : 468g

10/9/8 SPEEDS



- DLR500

**RS****DLR500**

- 10-Speed, Triple/Double (switchable)
- Dual Release Function
- Alloy Large Lever with Composite Small Lever
- Gear Display
- Stainless Bolts
- Slick-Stainless Inner Cable
- Weight : 262g

**R9****DLR930**

- 9-Speed, Triple/ Double (switchable)
- Dual Release Function
- Alloy Large Lever with Composite Small Lever
- Gear Display
- Stainless Bolts
- Slick-Stainless Inner Cable
- Weight : 262g

**R8****DLR800**

- 8-Speed, Triple/ Double (switchable)
- Dual Release Function
- Composite Levers
- Gear Display
- Slick-Galvanized Inner Cable
- Weight : 268g



10,9,8 SPEEDS



- STF900

**RS****STFS00**

- 10-Speed, Triple/ Double (switchable)
- Dual Release Function
- Alloy Large Lever with Composite Small Lever
- Gear Display
- Stainless Bolts
- Slick-Stainless Inner Cable
- Forged Alloy Brake Lever
- Alloy Brake Bracket
- For V-Brake & Mechanical Disc Brake
- Ergonomic 2 Finger Brake Lever
- Weight : 462g

**R9****STF900**

- 9-Speed, Triple/ Double (switchable)
- Dual Release Function
- Alloy Large Lever with Composite Small Lever
- Gear Display
- Stainless Bolts
- Slick-Stainless Inner Cable
- Forged Alloy Brake Lever
- Alloy Brake Bracket
- For V-Brake & Mechanical Disc Brake
- Ergonomic 2 Finger Brake Lever
- Weight : 462g

**R8****STF800**

- 8-Speed, Triple/ Double (switchable)
- Dual Release Function
- Composite Levers
- Gear Display
- Slick- Galvanized Inner Cable
- Forged Alloy Brake Lever
- Alloy Brake Bracket
- For V-Brake & Mechanical Disc Brake
- Ergonomic 2 Finger Brake Lever
- Weight : 468g



8/7/6/5 SPEEDS



m2

## TSM21

- 8/7/6/5-Speed, Triple/Friction
- Ergonomic Grip
- Color Option : G[Gray] / R[Red] / O[Orange]



11 SPEEDS



### CN11A

- 11-speed
- Chromized Pins & Rollers
- Chromoly Plates
- S[Silver]
- Weight : 226g(110L)



### CN11S

- Chromized Pins & Rollers
- Chromoly Hollow Outer Plates
- S[Silver]
- Weight : 225g(110L)



10 SPEEDS



### CN10A

- 10-speed
- Chromized Pins
- Chromoly Plates
- 1[Silver/Gray] / B[Black]
- Weight : 263g(110L)



FCS Series

**STURMEY**  
**ARCHER**  
 EST. 1902


## FCS700

FCS721 42T W / Steel CGs  
 FCS722 42T W / Alloy OCG and Steel ICG

- Forged Alloy Crank
- SCM435 Bolt & Nuts

FCS741 44T W / Steel CGs  
 FCS742 44T W / Alloy OCG and Steel ICG

- Forged Alloy Crank
- SCM435 Bolt & Nuts

FCS755 44T W / Alloy CGs

- Alloy Chainring
- Forged Alloy Crank
- SCM435 Bolt & Nuts



## FCS600

FCS600 38T  
 FCS620 42T

- Forged Alloy Crank
- Ø92mm Cover Ring



## FCS400

FCS400 38T  
 FCS420 42T

- Forged Alloy Crank
- Ø92mm Cover Ring



## FCS200

FCS200 38T  
 FCS220 42T

- Forged Alloy Crank
- Ø92mm Cover Ring



1.5<sup>Watt</sup>

[ S ]



[ B ]

**HDS30**

- 6V\*1.5W
- Front Dynohub
- [Sealed Cartridge Bearing]

1.5<sup>Watt</sup>

[ S ]



[ B ]

Disc Brake

**HDS30K**

- 6V\*1.5W
- Front Disc Brake Dynohub
- [Sealed Cartridge Bearing]

# NOTEs

# NOTEs



**Sun Race Sturmey-Archer Inc.**

No.51, Haishan Central Street, Luzhu District,  
Taoyuan City, 33856 Taiwan

Tel:+886(3)354-3900

Fax:+886(3)354-2858

E-mail:info@sunrace.com

**Sun Race Sturmey-Archer Europe**

Nijverheidsweg 19A, 3641 RP Mijdrecht,  
The Netherlands.

Tel:+31(20)609-0221

Fax:+31(20)609-0211

E-mail:info@sunrace.nl

**Sun Race Sturmey-Archer USA**

952 School Street #409

Napa, CA 94559 U.S.A

Tel:+1(707)259-6700

Fax:+1(707)259-6710

E-mail:info@sunraceusa.com